

...decades of engineering genius!

WORKHORSE 1000e

Quick Start Guide

STEP 1 – Unpackaging

Recommended Tools:

- Safety Glasses
- Safety Gloves
- Strap cutting shears
- Utility knife
- 1-1/8" wrench – included

1. Unpackage **ONLY ON LEVEL GROUND** -- **TIPPING CAN CAUSE SERIOUS INJURY.**
2. Remove shrink-wrap.
3. Cut tie-bands that hold Workhorse 1000e onto shipping pallet – **USE CAUTION WHEN CUTTING BANDS.**
4. Remove any additional packages and loose accessories (if included) prior to removal from pallet.
Do not remove the BLADE HOLDER ASSEMBLY at this time.
5. Using a forklift, approach cautiously and guide the forklift forks into the receiving tubes - see Diagram #1
6. Lift assembly slowly and remove from pallet.

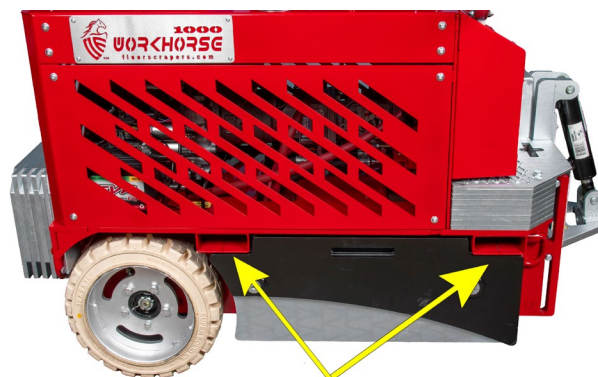


Diagram 1

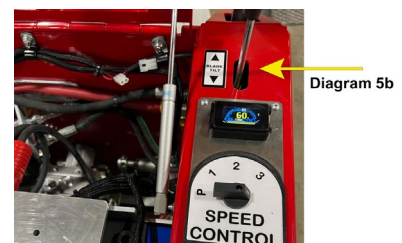
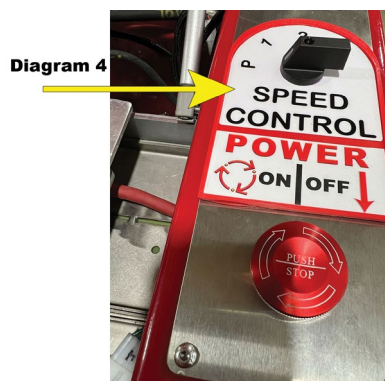
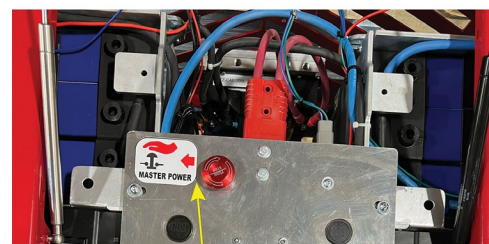
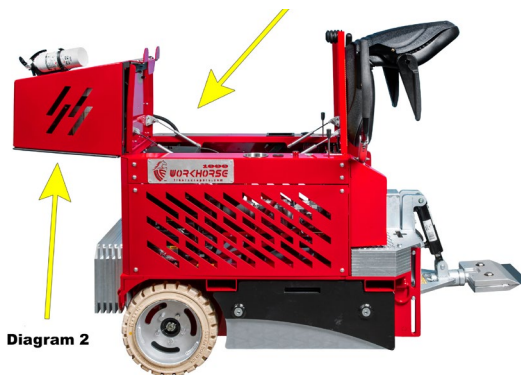
...decades of engineering genius!

WORKHORSE 1000e

Quick Start Guide

STEP 2 – Initial Start-Up

1. Raise the rear enclosure – See **Diagram #2.** and release Master Power switch – See **Diagram #3**
2. Close the Rear enclosure
3. Spread lap bars to gain access to the operator seat.
4. Operator must be seated to activate presence switch.
5. Close the Lap Bars after seated
6. Position Speed Selector to “P” (PARK) – See **Diagram #4**
7. Release Emergency Stop Button on Control Panel – See **Diagram #4**
8. Position Speed Selector to “1” for initial start-up and maneuvering.
9. Use caution when operating machine
10. Push both Lap Bars forward to move forward; pull backward to reverse.
Varying positions of the left & right Lap Bars will turn the machine left & right
11. Raise Blade Slide Assembly with the “Lift” Hydraulic Control Lever (Left Side) **Diagram #5a**
12. Raise Blade Holder fully UP with the “Tilt” Hydraulic Control Lever (Right Side) **Diagram #5b**





Onsite Equipment Manufacturing

www.floorscrapers.com

info@floorscrapers.com

Tel: 630.293.4000

...decades of engineering genius!

WORKHORSE 1000e

Quick Start Guide

STEP 3 - Blade Holder & Blade Installation

Recommended Tools:

- Safety Glasses
- Safety Gloves (cut resistant).
- 1-1/8" wrench – included

1. The Blade Holder Assembly must be installed and secured into one of the three (3) tubes with the locking pin. Lubricate the shaft with grease before inserting into chosen tube.

CAUTION: The 12" BLADE HOLDER ASSEMBLY is heavy – 30kg (65 lbs.)

CAUTION: The 24" BLADE HOLDER ASSEMBLY is heavy – 45kg (100 lbs.)

3. Blade Installation – **CAUTION: BLADES ARE EXTREMELY SHARP AND SHOULD BE HANDLED WEARING CUT RESISTANT SAFETY GLOVES**

Recommended procedures:

- i. Using the included 1-1/8" size wrench, loosen the two (2) bolts on the 12" Blade Holder or the four (4) bolts on the 24" Blade Holder by turning them counterclockwise approximately 2 turns. Do not remove the bolts. Removal of the bolts can cause the BLADE HOLDER CLAMP to be insecure and potentially cause injury.
- ii. Insert and center the blade with the sharp edge out and the ground edge up. **CAUTION: KEEP FINGERS AND BODY PARTS AWAY FROM SHARP EDGES OF BLADE**
- iii. Using the 1-1/8" size wrench, carefully tighten the bolts by turning them clockwise and applying no more than 890 ft. N (200 ft. lbs.) of torque.

WARNING: Never pull or push the wrench toward the sharp edge of the blade...ALWAYS work away from the blade's sharp edge!



Onsite Equipment Manufacturing

www.floorscrapers.com

info@floorscrapers.com

Tel: 630.293.4000

...decades of engineering genius!

WORKHORSE 1000e

Quick Start Guide

STEP 4 – Operation

Recommendations and Tips:

- i. To maximize runtime, the batteries should be charged to 100% - see Step 5 for charging.
 - ii. The Workhorse 1000e's Blade Holder starting angle is approximately 30 degrees Tilt position. This is an optimal starting angle for scraping.
 - iii. To add weight on the blade, use the "Lift" Hydraulic Control Lever to lower the Blade Slide Assembly. It is not recommended to raise the Front Wheel Caster off the floor more than 1".
 - iv. Tilt Blade Holder Assembly in small increments to keep a sharp edge on the blade to make removal of flooring easier.
 - v. As blade edge wears, tilt the Blade Holder Assembly to enhance scraping action.
 - vi. Steep angles of tilt can cause premature blade failure and reduce visibility of area being scraped.
 - vii. Hand grinding the blade edge is not necessary. Raise the Blade Slide Assembly up and rotate the blade holder assembly 180 degrees to achieve a new scraping edge on the blade.
 - viii. For all jobsite maneuvering without scraping – the operator can raise the Blade Holder Slide Assembly up without having to change the tilt angle, thus maintaining a sharp edge.
 - ix. Lubrication of Blade Holder Shaft should be done daily.
3. Remove scraping blade before moving or changing Blade Holder Assembly.

...decades of engineering genius!

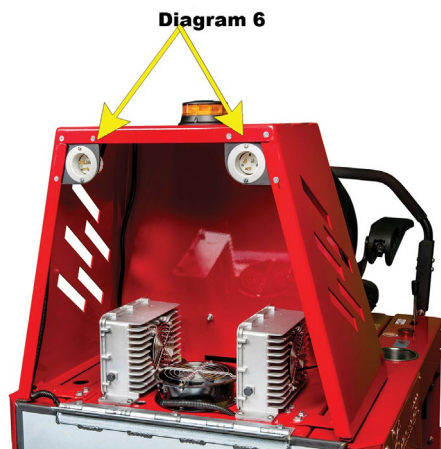
WORKHORSE 1000e

Quick Start Guide

STEP 5 – Charging Batteries

Equipment Needed:

Two (2) extension cords (not included) to handle up to 20 Amps 115 Volt.



Connect extension cords to each plug – see diagram 6 above.

Charging time will vary depending on the State of Charge of the batteries.

If batteries are fully depleted, charging can take up to 14 hours to reach 100% capacity

Light on charger → Flashing Red light indicates 0% to 90%

→ Flashing Green light indicates 90% to 99%

→ Steady Green light indicates 100%